

**TYPICAL SECTION NO. 1**  
 MAPS # 1 - 39

PAVEMENT SCHEDULE	
F1	ASPHALT SURFACE TREATMENT, FOG SEAL
F2	ASPHALT SURFACE TREATMENT, TRIPLE SEAL WITH NO.78M STONE
U	EXISTING PAVEMENT

NOTE: TYPICALS ARE NOT TO SCALE



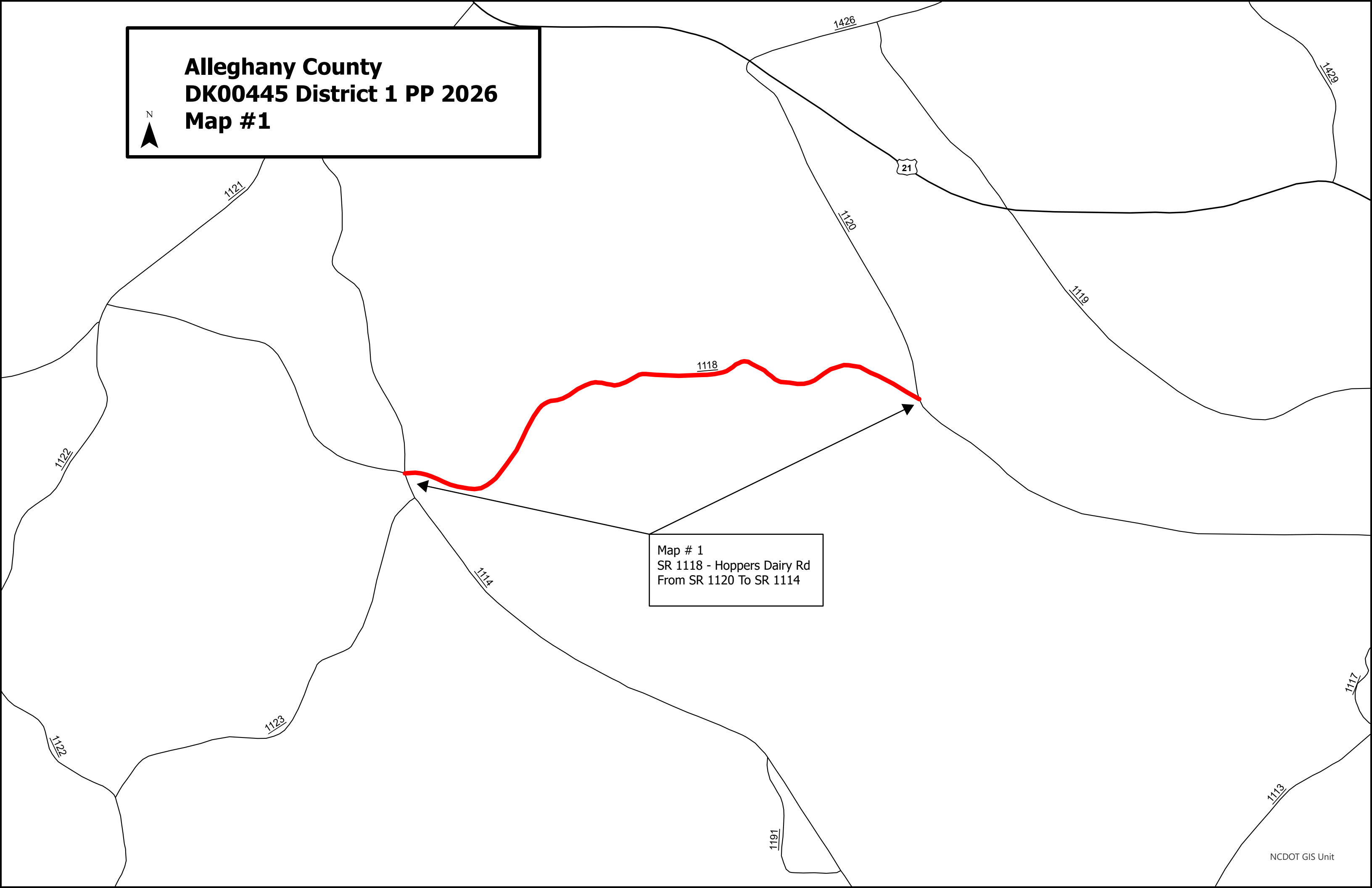
REVISIONS

## SUMMARY OF QUANTITIES

PROJECT NO	COUNTY	MAP NO	ROUTE	DESCRIPTION	TYP NO	LANES	LANE TYPE	1820000000-E		1836000000-E		1838000000-E		
								LENGTH	WIDTH	BEGIN MP	END MP	ASPHALT SURFACE TREATMENT, FOG SEAL	ASPHALT SURFACE TREATMENT, TRIPLE SEAL	EMULSION FOR ASPHALT SURFACE TREATMENT
								MI	FT			SY	SY	GAL
2026CPT.11.21.20032	Alleghany	1	SR 1118 (HOPPERS DAIRY ROAD)	FROM SR 1120 TO SR 1114	1	2	2WU	0.96	18	1.44	2.40	11,658	11,658	8,860
2026CPT.11.21.20032	Alleghany	2	SR 1300 (ALLEN ROAD)	FROM NC 113 TO SR 1301/END PAVEMENT	1	2	2WU	1.41	18	0.00	1.41	17,123	17,123	13,013
2026CPT.11.21.20032	Alleghany	3	SR 1301 (FLINT HILL ROAD)	FROM SR 1300 TO US 221	1	2	2WU	0.95	18	0.00	0.95	11,658	11,658	8,860
2026CPT.11.21.20032	Alleghany	4	SR 1303 (TOPIA ROAD)	FROM SR 1300 TO SR 1308	1	2	2WU	2.67	18	0.00	2.67	32,388	32,388	24,615
2026CPT.11.21.20032	Alleghany	5	SR 1482 (LAZY BRANCH ROAD)	FROM SR 1459 TO SR 1422	1	2	2WU	1.79	18	0.00	1.79	21,738	21,738	16,521
<b>TOTAL FOR PROJ NO. 2026CPT.11.21.20032</b>								<b>7.78</b>				<b>94,565</b>	<b>94,565</b>	<b>71,869</b>
2026CPT.11.21.20862	Surry	6	SR 1161 (KLONDIKE ROAD)	FROM US 21 TO END OF MAINTENANCE	1	2	2WU	2.16	18	0.00	2.16	26,231	26,231	19,936
2026CPT.11.21.20862	Surry	7	SR 1328 (HAYSTACK ROAD)	FROM SR 1330 TO END PAVEMENT	1	2	2WU	0.23	20	0.00	0.23	3,103	3,103	2,359
2026CPT.11.21.20862	Surry	8	SR 1330 (HAYSTACK ROAD)	FROM SR 1331 TO SR 1330	1	2	2WU	2.92	16	5.34	8.26	31,520	31,520	23,956
2026CPT.11.21.20862	Surry	9	SR 1334 (JUDSVILLE SCHOOL ROAD)	FROM SR 1335 TO SR 1338	1	2	2WU	2.43	20	1.46	3.89	32,654	32,654	24,817
2026CPT.11.21.20862	Surry	10	SR 1335 (RED HILL CREEK ROAD)	FROM SR 1546 TO SR 1334	1	2	2WU	1.26	20	1.01	2.27	13,763	13,763	10,460
2026CPT.11.21.20862	Surry	11	SR 1413 (OLD MILL ROAD)	FROM NC 89 TO SR 1408	1	2	2WU	1.02	18	0.00	1.02	12,387	12,387	9,414
2026CPT.11.21.20862	Surry	12	SR 1433 (BOYD DICKENS ROAD)	FROM NC 89 TO SR 1408	1	2	2WU	1.23	18	0.00	1.23	14,937	14,937	11,352
2026CPT.11.21.20862	Surry	13	SR 1687 (VERNON STREET)	FROM SR 1627 TO SR 1688	1	2	2WU	0.08	24	0.00	0.08	1,279	1,279	972
2026CPT.11.21.20862	Surry	14	SR 1688 (LORI LANE)	FROM CDS TO CDS	1	2	2WU	0.29	20	0.00	0.29	3,873	3,873	2,943
2026CPT.11.21.20862	Surry	15	SR 1689 (KIMBERLY STREET)	FROM SR 1688 TO CDS	1	2	2WU	0.10	20	0.00	0.10	1,349	1,349	1,025
2026CPT.11.21.20862	Surry	16	SR 1835 (DAN BRYANT ROAD)	FROM SR 1812 TO END OF MAINTENANCE	1	2	2WU	0.69	18	1.43	2.12	8,379	8,379	6,368
2026CPT.11.21.20862	Surry	17	SR 2070 (CAUDLE ROAD)	FROM SR 2069 TO SR 2072	1	2	2WU	1.92	20	0.00	1.92	25,907	25,907	19,689
2026CPT.11.21.20862	Surry	18	SR 2072 (HAUSER ROAD)	FROM SR 2070 TO SR 2073	1	2	2WU	1.99	18	2.09	4.08	24,167	24,167	18,367
2026CPT.11.21.20862	Surry	19	SR 2073 (HAUSER ROAD)	FROM STOKES COUNTY LINE TO SR 2072	1	2	2WU	0.24	18	0.00	0.24	2,915	2,915	2,215
2026CPT.11.21.20862	Surry	20	SR 2451 (PAGE FARM ROAD)	FROM SR 1627 TO END OF MAINTENANCE	1	2	2WU	0.24	18	0.00	0.24	2,915	2,915	2,215
2026CPT.11.21.20862	Surry	21	SR 2452 (JILL FARM ROAD)	FROM SR 2451 TO END OF MAINTENANCE	1	2	2WU	0.13	18	0.00	0.13	1,579	1,579	1,200
<b>TOTAL FOR PROJ NO. 2026CPT.11.21.20862</b>								<b>16.93</b>				<b>206,958</b>	<b>206,958</b>	<b>157,288</b>
2026CPT.11.21.20992	Yadkin	22	SR 1112 (BROWN ROAD)	FROM SR 1103 TO SR 1100	1	2	2WU	1.84	20	1.32	3.16	24,828	24,828	18,869
2026CPT.11.21.20992	Yadkin	23	SR 1159 (LIBERTY CHURCH ROAD)	FROM DAVIE COUNTY LINE TO SR 1002	1	2	2WU	1.43	18	0.00	1.43	17,366	17,366	13,198
2026CPT.11.21.20992	Yadkin	24	SR 1186 (SANFORD DRIVE)	FROM SR 1159 TO END OF MAINTENANCE	1	2	2WU	0.38	17	0.00	0.38	4,358	4,358	3,312
2026CPT.11.21.20992	Yadkin	25	SR 1198 (MEMORIAL ROAD)	FROM CUL-DE-SAC TO CUL-DE-SAC	1	2	M2	1.28	36	0.00	1.28	31,089	31,089	23,628
2026CPT.11.21.20992	Yadkin	26	SR 1199 (SHORT ROAD)	FROM SR 1150 TO SR 1198	1	2	2WU	0.20	24	0.00	0.20	3,238	3,238	2,461
2026CPT.11.21.20992	Yadkin	27	SR 1203 (VANHOY ROAD)	FROM SR 1444 TO CUL-DE-SAC	1	2	2WU	0.06	20	0.00	0.06	810	810	616
2026CPT.11.21.20992	Yadkin	28	SR 1204 (KAREN ROAD)	FROM SR 1444 TO END OF MAINTENANCE	1	2	2WU	0.09	20	0.00	0.09	1,214	1,214	923
2026CPT.11.21.20992	Yadkin	29	SR 1205 (MARANATHA CHURCH ROAD)	FROM SR 1150 TO SR 1150	1	2	2WU	0.31	20	0.83	1.14	4,183	4,183	3,179
2026CPT.11.21.20992	Yadkin	30	SR 1205 (SIMCOX ROAD)	FROM SR 1150 TO SR 1126	1	2	2WU	0.13	20	1.14	1.27	1,754	1,754	1,333
2026CPT.11.21.20992	Yadkin	31	SR 1319 (TWIN CREEK ROAD)	FROM SR 1320 TO SR 1300	1	2	2WU	1.17	20	0.00	1.17	15,787	15,787	11,998
2026CPT.11.21.20992	Yadkin	32	SR 1441 (BRANON CHURCH ROAD)	FROM SR 1150 TO SR 1314	1	2	2WU	0.47	18	0.00	0.47	5,708	5,708	4,338
2026CPT.11.21.20992	Yadkin	33	SR 1444 (VANHOY ROAD)	FROM CUL-DE-SAC TO SR 1150	1	2	2WU	0.73	18	0.00	0.73	8,865	8,865	6,737
2026CPT.11.21.20992	Yadkin	34	SR 1532 (CRISSMAN ROAD)	FROM SR 1529 TO SR 1533	1	2	2WU	1.23	20	0.00	1.23	16,597	16,597	12,614
2026CPT.11.21.20992	Yadkin	35	SR 1632 (CHERRYWOOD ROAD)	FROM SR 1549 TO END OF MAINTENANCE	1	2	2WU	0.20	20	0.00	0.20	2,699	2,699	2,051
2026CPT.11.21.20992	Yadkin	36	SR 1658 (RIDGWAY DRIVE)	FROM SR 1612 TO CUL-DE-SAC	1	2	2WU	0.40	20	0.00	0.40	5,397	5,397	4,102
2026CPT.11.21.20992	Yadkin	37	SR 1659 (TWIN LAKES COURT)	FROM SR 1658 TO END OF MAINTENANCE	1	2	2WU	0.08	20	0.00	0.08	1,066	1,066	810
2026CPT.11.21.20992	Yadkin	38	SR 1665 (RAVEN HILL DRIVE)	FROM SR 1658 TO END OF MAINTENANCE	1	2	2WU	0.08	20	0.00	0.08	1,079	1,079	820
2026CPT.11.21.20992	Yadkin	39	SR 1761 (EDGEWOOD DRIVE)	FROM SR 1742 TO END OF MAINTENANCE	1	2	2WU	0.30	20	0.00	0.30	4,048	4,048	3,076
<b>TOTAL FOR PROJ NO. 2026CPT.11.21.20992</b>								<b>10.38</b>				<b>150,086</b>	<b>150,086</b>	<b>114,065</b>
<b>GRAND TOTAL</b>								<b>35.08</b>				<b>451,609</b>	<b>451,609</b>	<b>343,222</b>

DK00445 2026 ASPHALT SURFACE TREATMENT DISTRICT 1												PROJECT NO.	SHEET NO.	
												DK00445	3	
<b>THERMOPLASTIC AND PAINT QUANTITIES</b>														
PROJECT NO	COUNTY	MAP NO	ROUTE	DESCRIPTION	TYP NO	LANES	LANE TYPE	LENGTH	WIDTH	BEGIN MP	END MP	4413000000-E WORK ZONE ADVANCE/GENERAL WARNING SIGNING	4810000000-E 4" WHITE PAINT	4810000000-E 4" YELLOW PAINT
								MI	FT			SF	LF	LF
2026CPT.11.21.20032	Alleghany	1	SR 1118 (HOPPERS DAIRY ROAD)	FROM SR 1120 TO SR 1114	1	2	2WU	0.96	18	1.44	2.40	112	20,659	20,659
2026CPT.11.21.20032	Alleghany	2	SR 1300 (ALLEN ROAD)	FROM NC 113 TO SR 1301/END PAVEMENT	1	2	2WU	1.41	18	0.00	1.41	176	30,343	30,343
2026CPT.11.21.20032	Alleghany	3	SR 1301 (FLINT HILL ROAD)	FROM SR 1300 TO US 221	1	2	2WU	0.95	18	0.00	0.95	112	20,444	20,444
2026CPT.11.21.20032	Alleghany	4	SR 1303 (TOPIA ROAD)	FROM SR 1300 TO SR 1308	1	2	2WU	2.67	18	0.00	2.67	218	57,394	57,394
2026CPT.11.21.20032	Alleghany	5	SR 1482 (LAZY BRANCH ROAD)	FROM SR 1459 TO SR 1422	1	2	2WU	1.79	18	0.00	1.79	176	38,521	38,521
<b>TOTAL FOR PROJ NO. 2026CPT.11.21.20032</b>								<b>7.78</b>				<b>794</b>	<b>167,361</b>	<b>167,361</b>
2026CPT.11.21.20862	Surry	6	SR 1161 (KLONDIKE ROAD)	FROM US 21 TO END OF MAINTENANCE	1	2	2WU	2.16	18	0.00	2.16	196	46,483	46,483
2026CPT.11.21.20862	Surry	7	SR 1328 (HAYSTACK ROAD)	FROM SR 1330 TO END PAVEMENT	1	2	2WU	0.23	20	0.00	0.23	48	4,950	4,950
2026CPT.11.21.20862	Surry	8	SR 1330 (HAYSTACK ROAD)	FROM SR 1331 TO SR 1330	1	2	2WU	2.92	16	5.34	8.26	345	62,838	62,838
2026CPT.11.21.20862	Surry	9	SR 1334 (JUDSVILLE SCHOOL ROAD)	FROM SR 1335 TO SR 1338	1	2	2WU	2.43	20	1.46	3.89	218	52,294	52,294
2026CPT.11.21.20862	Surry	10	SR 1335 (RED HILL CREEK ROAD)	FROM SR 1546 TO SR 1334	1	2	2WU	1.26	20	1.01	2.27	176	27,115	27,115
2026CPT.11.21.20862	Surry	11	SR 1413 (OLD MILL ROAD)	FROM NC 89 TO SR 1408	1	2	2WU	1.02	18	0.00	1.02	112	21,950	21,950
2026CPT.11.21.20862	Surry	12	SR 1433 (BOYD DICKENS ROAD)	FROM NC 89 TO SR 1408	1	2	2WU	1.23	18	0.00	1.23	176	26,470	26,470
2026CPT.11.21.20862	Surry	13	SR 1687 (VERNON STREET)	FROM SR 1627 TO SR 1688	1	2	2WU	0.08	24	0.00	0.08	112		
2026CPT.11.21.20862	Surry	14	SR 1688 (LORI LANE)	FROM CDS TO CDS	1	2	2WU	0.29	20	0.00	0.29	48		
2026CPT.11.21.20862	Surry	15	SR 1689 (KIMBERLY STREET)	FROM SR 1688 TO CDS	1	2	2WU	0.10	20	0.00	0.10	48		
2026CPT.11.21.20862	Surry	16	SR 1835 (DAN BRYANT ROAD)	FROM SR 1812 TO END OF MAINTENANCE	1	2	2WU	0.69	18	1.43	2.12	112		
2026CPT.11.21.20862	Surry	17	SR 2070 (CAUDLE ROAD)	FROM SR 2069 TO SR 2072	1	2	2WU	1.92	20	0.00	1.92	176	41,318	41,318
2026CPT.11.21.20862	Surry	18	SR 2072 (HAUSER ROAD)	FROM SR 2070 TO SR 2073	1	2	2WU	1.99	18	2.09	4.08	176	42,825	42,825
2026CPT.11.21.20862	Surry	19	SR 2073 (HAUSER ROAD)	FROM STOKES COUNTY LINE TO SR 2072	1	2	2WU	0.24	18	0.00	0.24	48	5,165	5,165
2026CPT.11.21.20862	Surry	20	SR 2451 (PAGE FARM ROAD)	FROM SR 1627 TO END OF MAINTENANCE	1	2	2WU	0.24	18	0.00	0.24	48		
2026CPT.11.21.20862	Surry	21	SR 2452 (JILL FARM ROAD)	FROM SR 2451 TO END OF MAINTENANCE	1	2	2WU	0.13	18	0.00	0.13	48		
<b>TOTAL FOR PROJ NO. 2026CPT.11.21.20862</b>								<b>16.93</b>				<b>2,087</b>	<b>331,408</b>	<b>331,408</b>
2026CPT.11.21.20992	Yadkin	22	SR 1112 (BROWN ROAD)	FROM SR 1103 TO SR 1100	1	2	2WU	1.84	20	1.32	3.16	176	39,597	39,597
2026CPT.11.21.20992	Yadkin	23	SR 1159 (LIBERTY CHURCH ROAD)	FROM DAVIE COUNTY LINE TO SR 1002	1	2	2WU	1.43	18	0.00	1.43	176	30,774	30,774
2026CPT.11.21.20992	Yadkin	24	SR 1186 (SANFORD DRIVE)	FROM SR 1159 TO END OF MAINTENANCE	1	2	2WU	0.38	17	0.00	0.38	112		
2026CPT.11.21.20992	Yadkin	25	SR 1198 (MEMORIAL ROAD)	FROM CUL-DE-SAC TO CUL-DE-SAC	1	2	M2	1.28	36	0.00	1.28	176	27,546	27,546
2026CPT.11.21.20992	Yadkin	26	SR 1199 (SHORT ROAD)	FROM SR 1150 TO SR 1198	1	2	2WU	0.20	24	0.00	0.20	48	4,304	4,304
2026CPT.11.21.20992	Yadkin	27	SR 1203 (VANHOF ROAD)	FROM SR 1444 TO CUL-DE-SAC	1	2	2WU	0.06	20	0.00	0.06	48	1,291	1,291
2026CPT.11.21.20992	Yadkin	28	SR 1204 (KAREN ROAD)	FROM SR 1444 TO END OF MAINTENANCE	1	2	2WU	0.09	20	0.00	0.09	48	1,937	1,937
2026CPT.11.21.20992	Yadkin	29	SR 1205 (MARANATHA CHURCH ROAD)	FROM SR 1150 TO SR 1150	1	2	2WU	0.31	20	0.83	1.14	48	6,671	6,671
2026CPT.11.21.20992	Yadkin	30	SR 1205 (SIMCOX ROAD)	FROM SR 1150 TO SR 1126	1	2	2WU	0.13	20	1.14	1.27	48	2,798	2,798
2026CPT.11.21.20992	Yadkin	31	SR 1319 (TWIN CREEK ROAD)	FROM SR 1320 TO SR 1300	1	2	2WU	1.17	20	0.00	1.17	112	25,178	25,178
2026CPT.11.21.20992	Yadkin	32	SR 1441 (BRANON CHURCH ROAD)	FROM SR 1150 TO SR 1314	1	2	2WU	0.47	18	0.00	0.47	48	10,114	10,114
2026CPT.11.21.20992	Yadkin	33	SR 1444 (VANHOF ROAD)	FROM CUL-DE-SAC TO SR 1150	1	2	2WU	0.73	18	0.00	0.73	48	15,710	15,710
2026CPT.11.21.20992	Yadkin	34	SR 1532 (CRISSMAN ROAD)	FROM SR 1529 TO SR 1533	1	2	2WU	1.23	20	0.00	1.23	112	26,470	26,470
2026CPT.11.21.20992	Yadkin	35	SR 1632 (CHERRYWOOD ROAD)	FROM SR 1549 TO END OF MAINTENANCE	1	2	2WU	0.20	20	0.00	0.20	48		
2026CPT.11.21.20992	Yadkin	36	SR 1658 (RIDGWAY DRIVE)	FROM SR 1612 TO CUL-DE-SAC	1	2	2WU	0.40	20	0.00	0.40	112		
2026CPT.11.21.20992	Yadkin	37	SR 1659 (TWIN LAKES COURT)	FROM SR 1658 TO END OF MAINTENANCE	1	2	2WU	0.08	20	0.00	0.08	48		
2026CPT.11.21.20992	Yadkin	38	SR 1665 (RAVEN HILL DRIVE)	FROM SR 1658 TO END OF MAINTENANCE	1	2	2WU	0.08	20	0.00	0.08	48		
2026CPT.11.21.20992	Yadkin	39	SR 1761 (EDGEWOOD DRIVE)	FROM SR 1742 TO END OF MAINTENANCE	1	2	2WU	0.30	20	0.00	0.30	48		
<b>TOTAL FOR PROJ NO. 2026CPT.11.21.20992</b>								<b>10.38</b>				<b>1,504</b>	<b>192,390</b>	<b>192,390</b>
<b>GRAND TOTAL</b>								<b>35.08</b>				<b>4,385</b>	<b>691,159</b>	<b>691,159</b>

**Alleghany County  
DK00445 District 1 PP 2026  
Map #1**



Map # 1  
SR 1118 - Hoppers Dairy Rd  
From SR 1120 To SR 1114

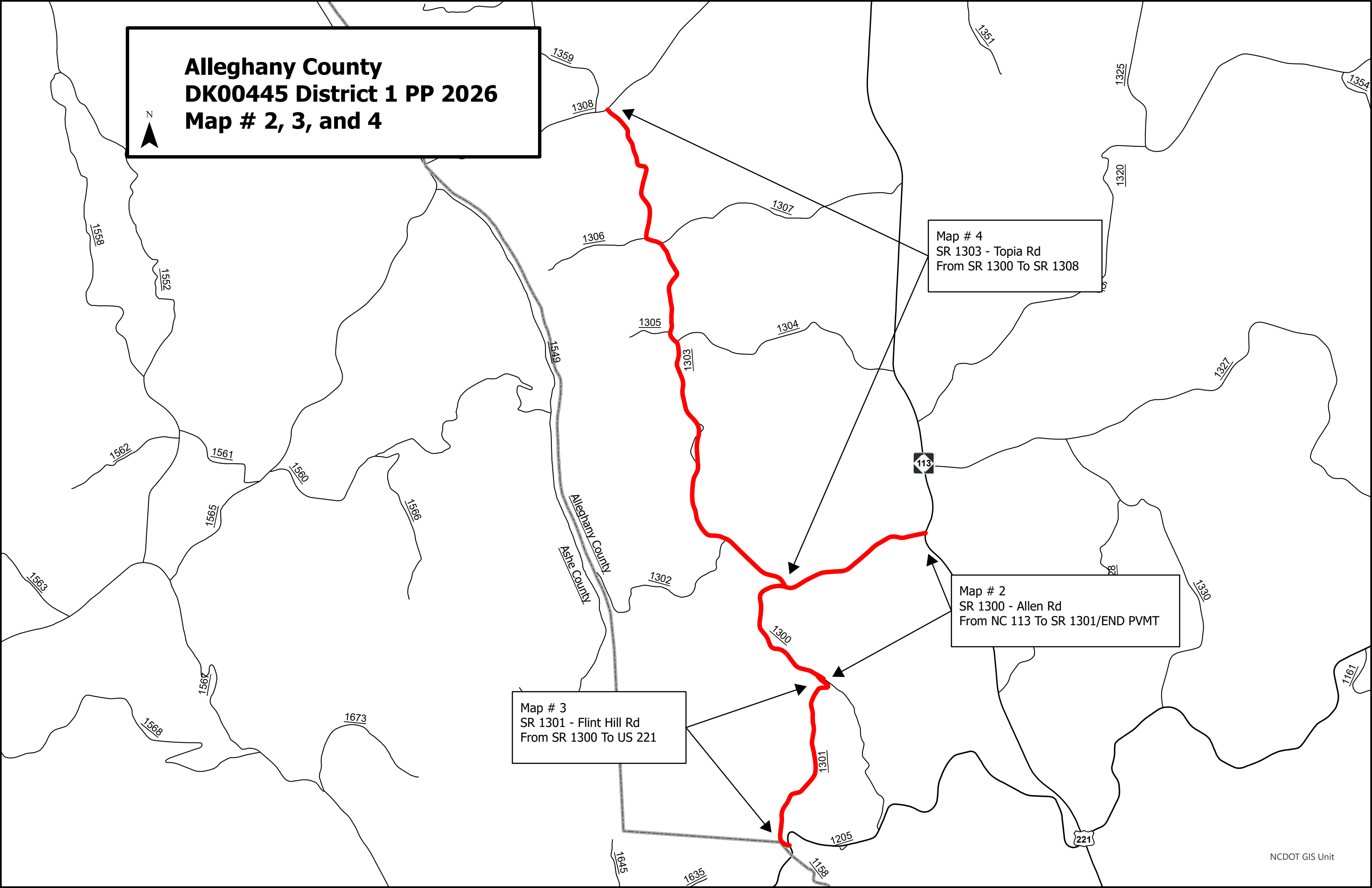
**Allegheny County  
DK00445 District 1 PP 2026  
Map # 2, 3, and 4**



Map # 4  
SR 1303 - Topia Rd  
From SR 1300 To SR 1308

Map # 2  
SR 1300 - Allen Rd  
From NC 113 To SR 1301/END PVMT

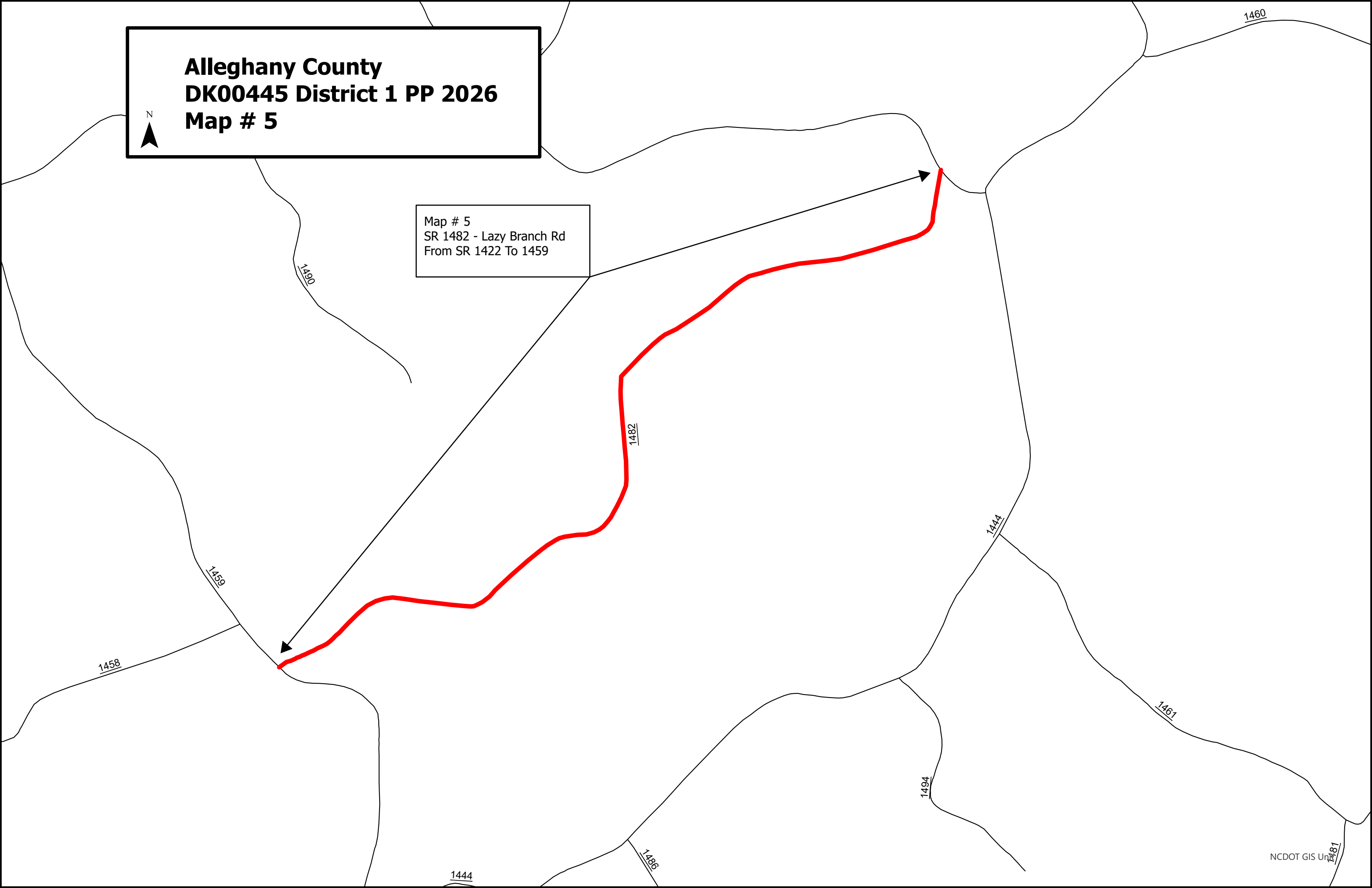
Map # 3  
SR 1301 - Flint Hill Rd  
From SR 1300 To US 221



**Alleghany County**  
**DK00445 District 1 PP 2026**  
**Map # 5**



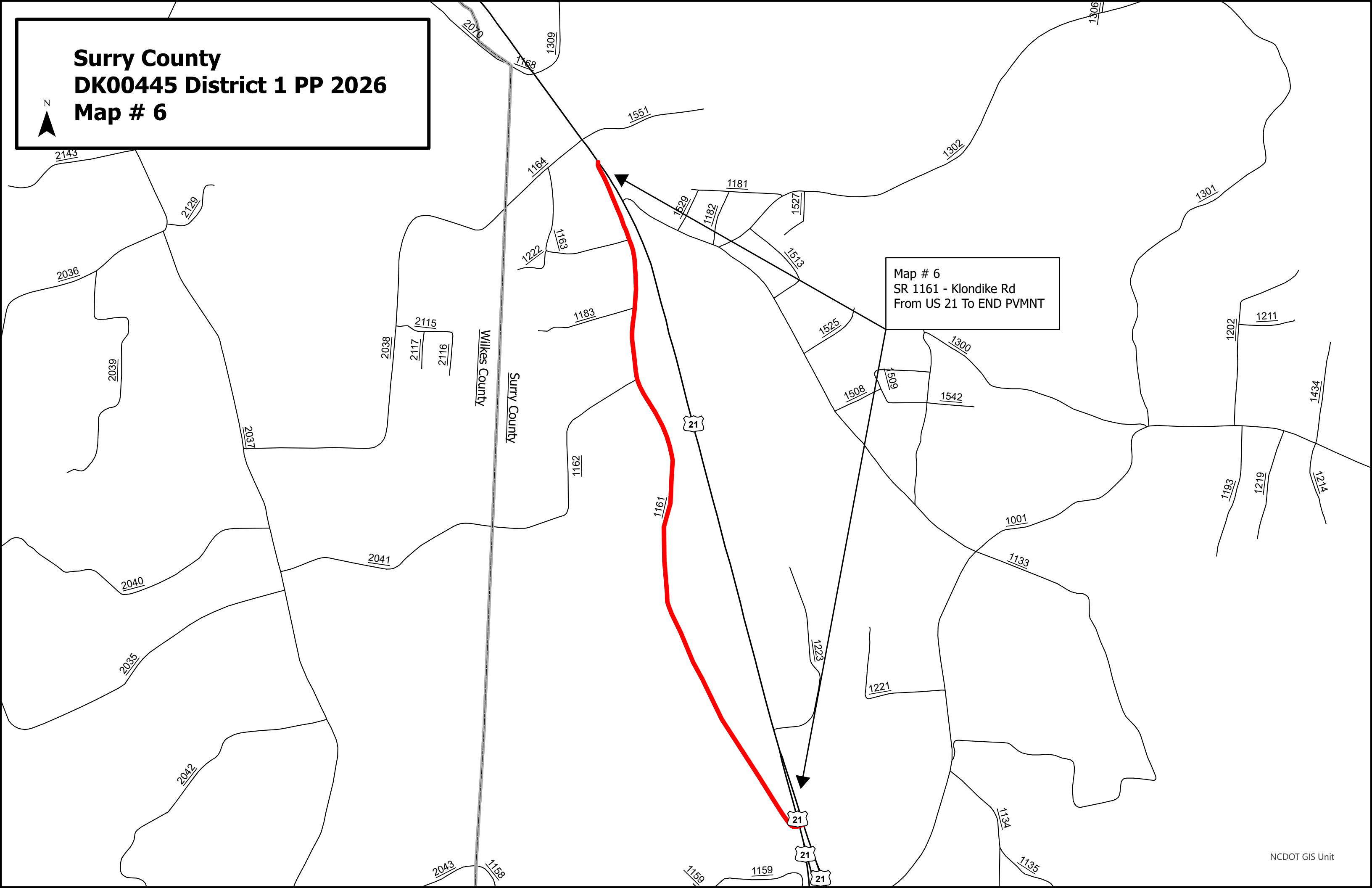
Map # 5  
SR 1482 - Lazy Branch Rd  
From SR 1422 To 1459



**Surry County  
DK00445 District 1 PP 2026  
Map # 6**



Map # 6  
SR 1161 - Klondike Rd  
From US 21 To END PVMNT



**Surry County**  
**DK00445 District 1 PP 2026**  
**Map # 7 and 8**



Map # 7  
SR 1328 - Haystack Rd  
From 1330 To END PVMNT

Map # 8  
SR 1330 - Haystack Rd  
From SR 1331 To SR 1328

1328

1330

1332

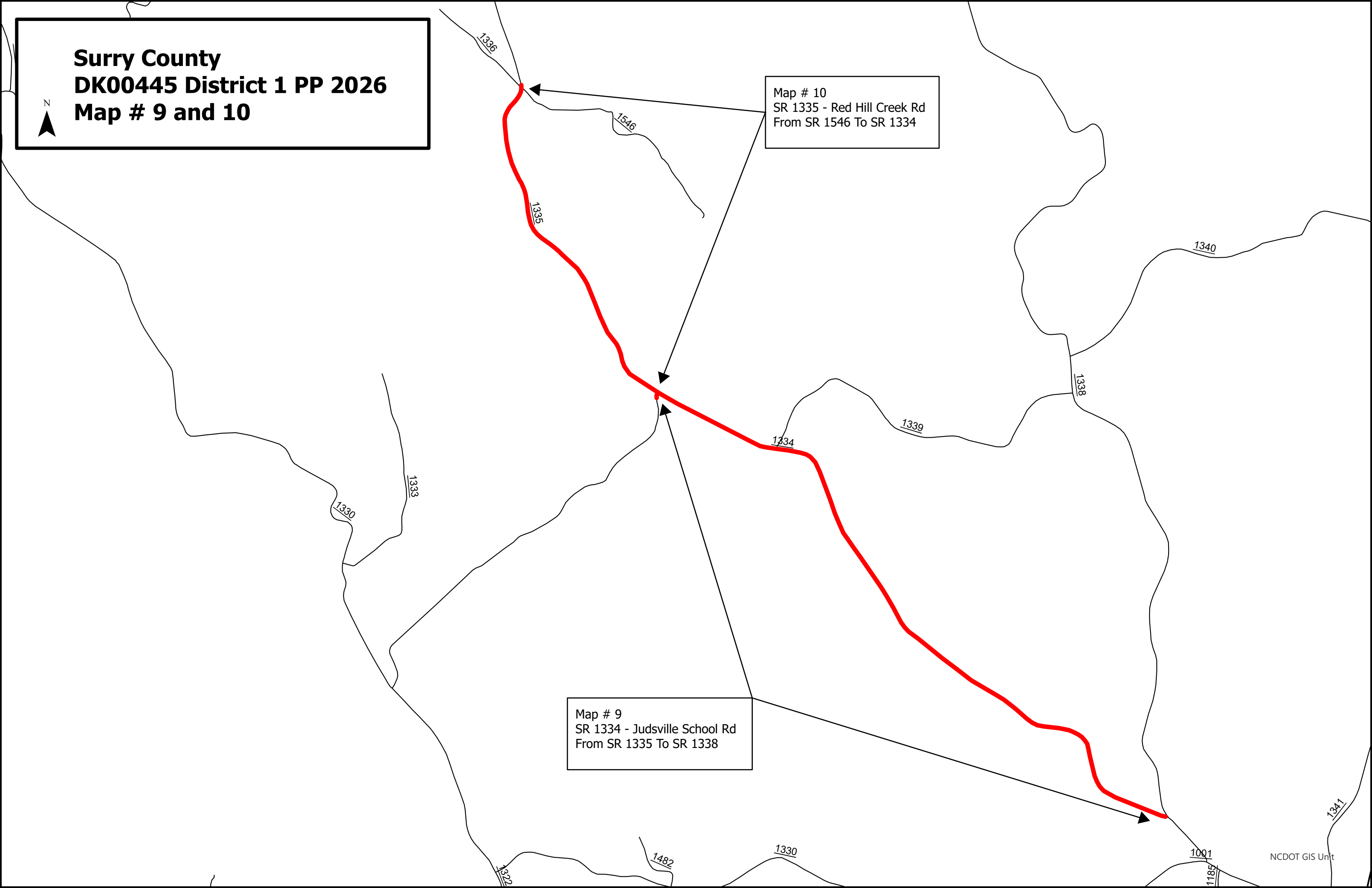
1331

**Surry County**  
**DK00445 District 1 PP 2026**  
**Map # 9 and 10**



Map # 10  
SR 1335 - Red Hill Creek Rd  
From SR 1546 To SR 1334

Map # 9  
SR 1334 - Judsville School Rd  
From SR 1335 To SR 1338

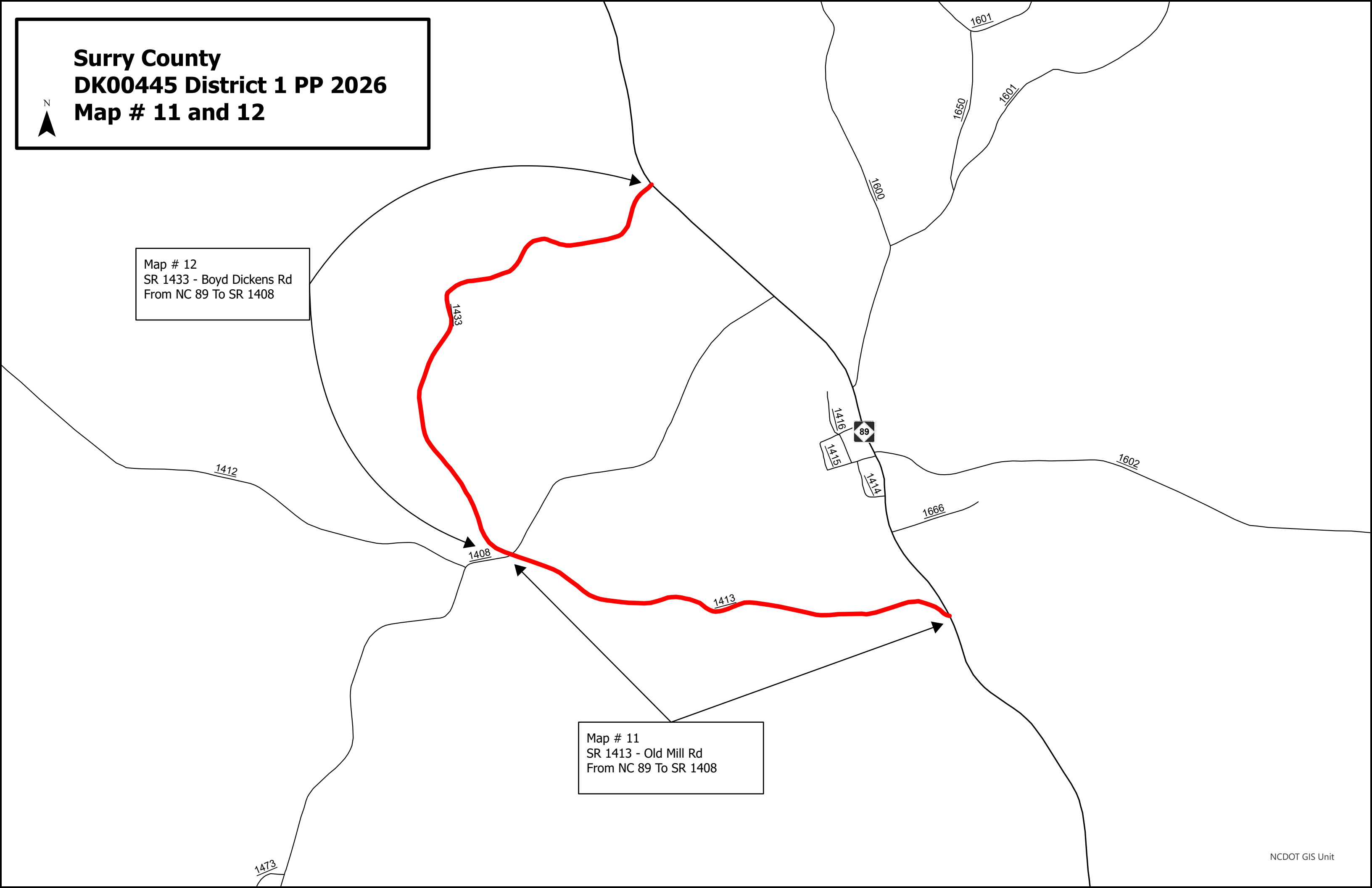


**Surry County**  
**DK00445 District 1 PP 2026**  
**Map # 11 and 12**



Map # 12  
SR 1433 - Boyd Dickens Rd  
From NC 89 To SR 1408

Map # 11  
SR 1413 - Old Mill Rd  
From NC 89 To SR 1408



**Surry County**  
**DK00445 District 1 PP 2026**  
**Map # 13, 14, 15, 20, and 21**



Surry County Virginia

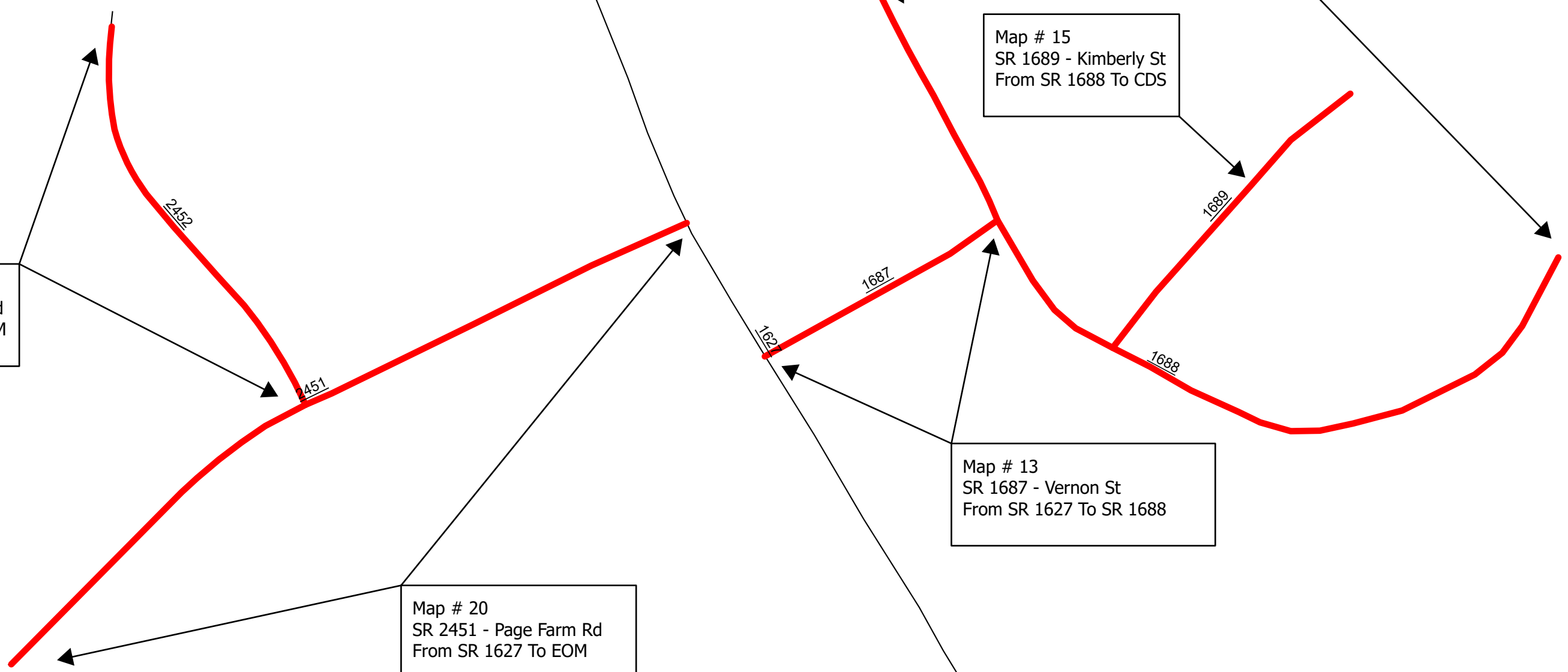
Map # 14  
SR 1688 - Lori Ln  
From CDS To CDS

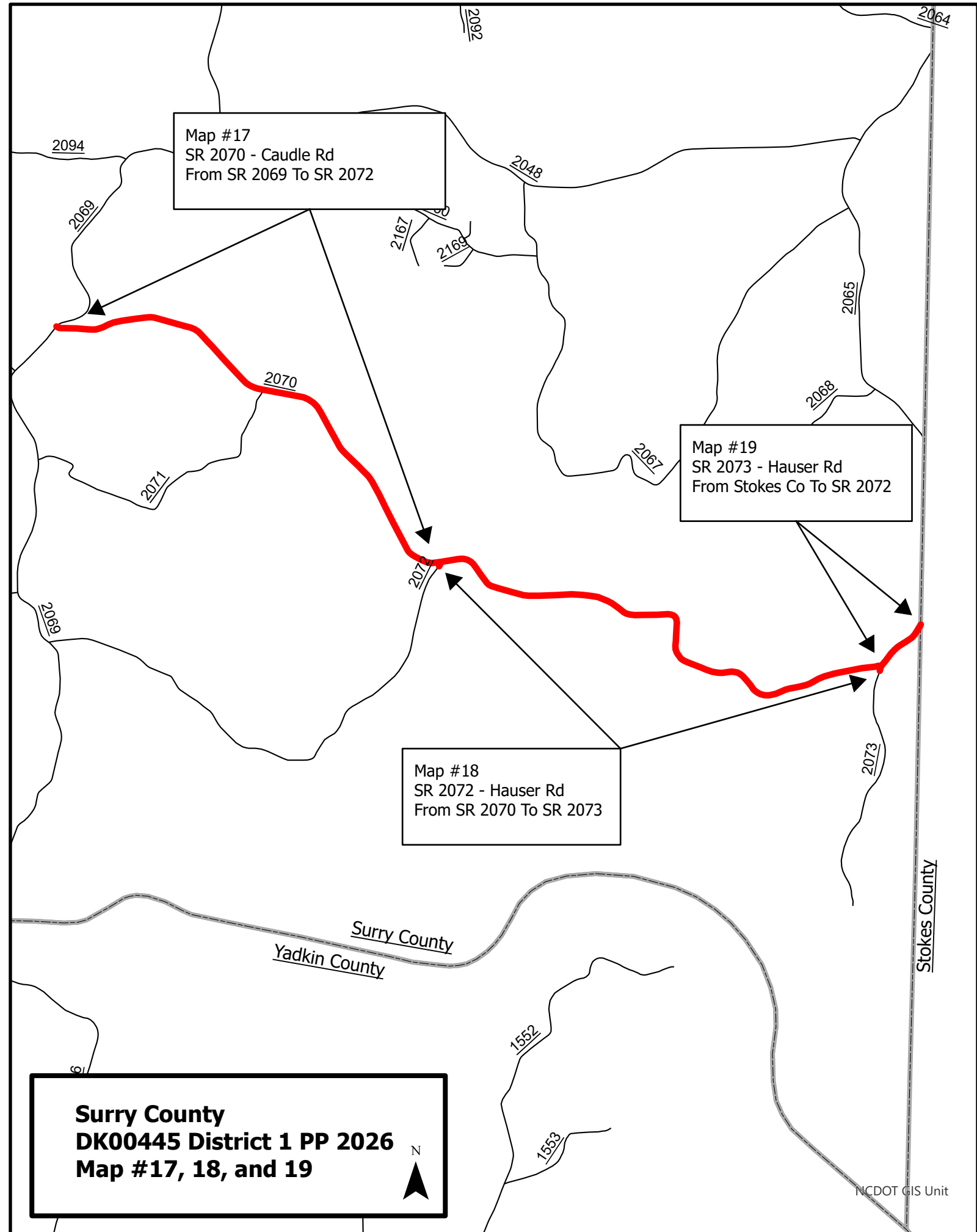
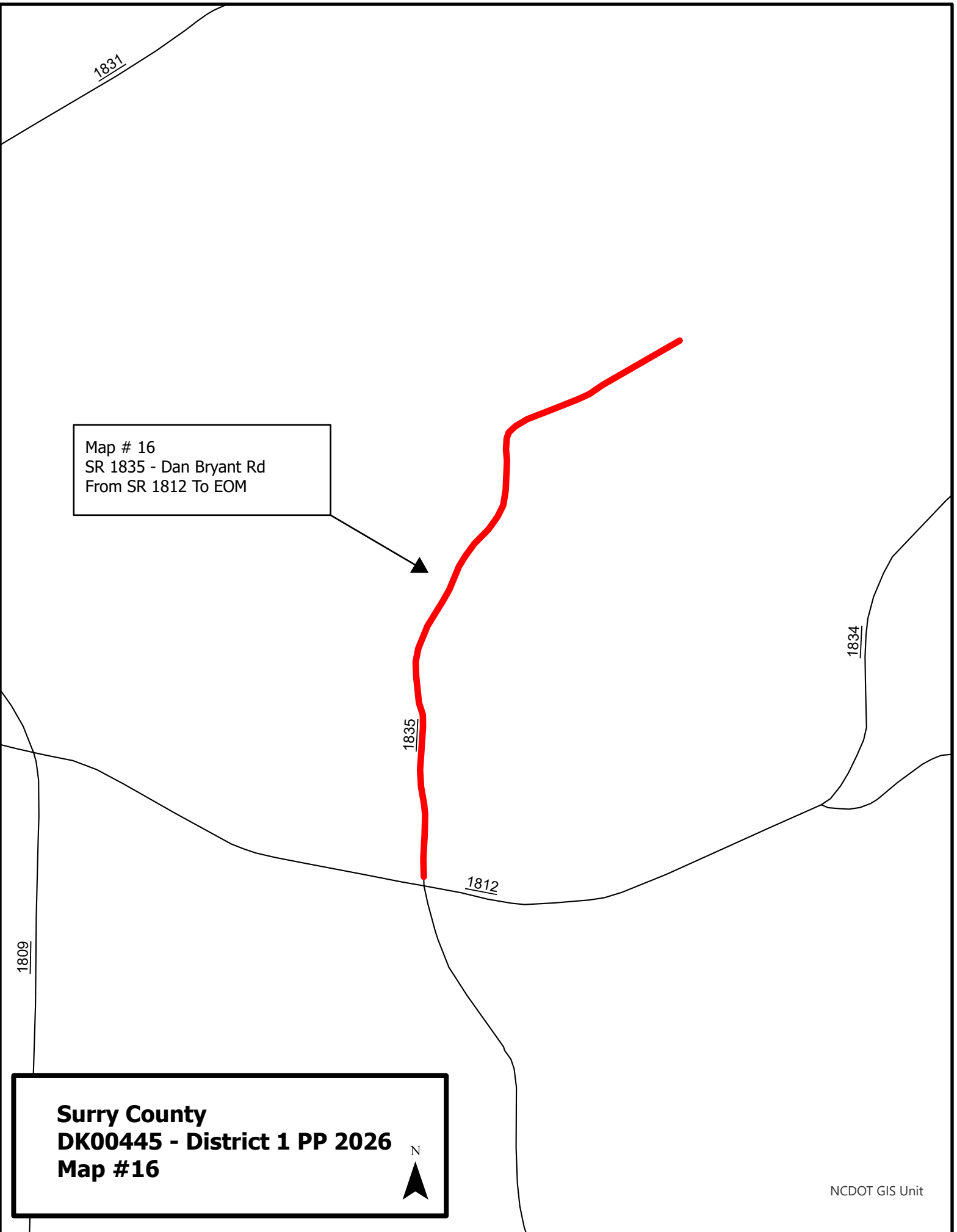
Map # 15  
SR 1689 - Kimberly St  
From SR 1688 To CDS

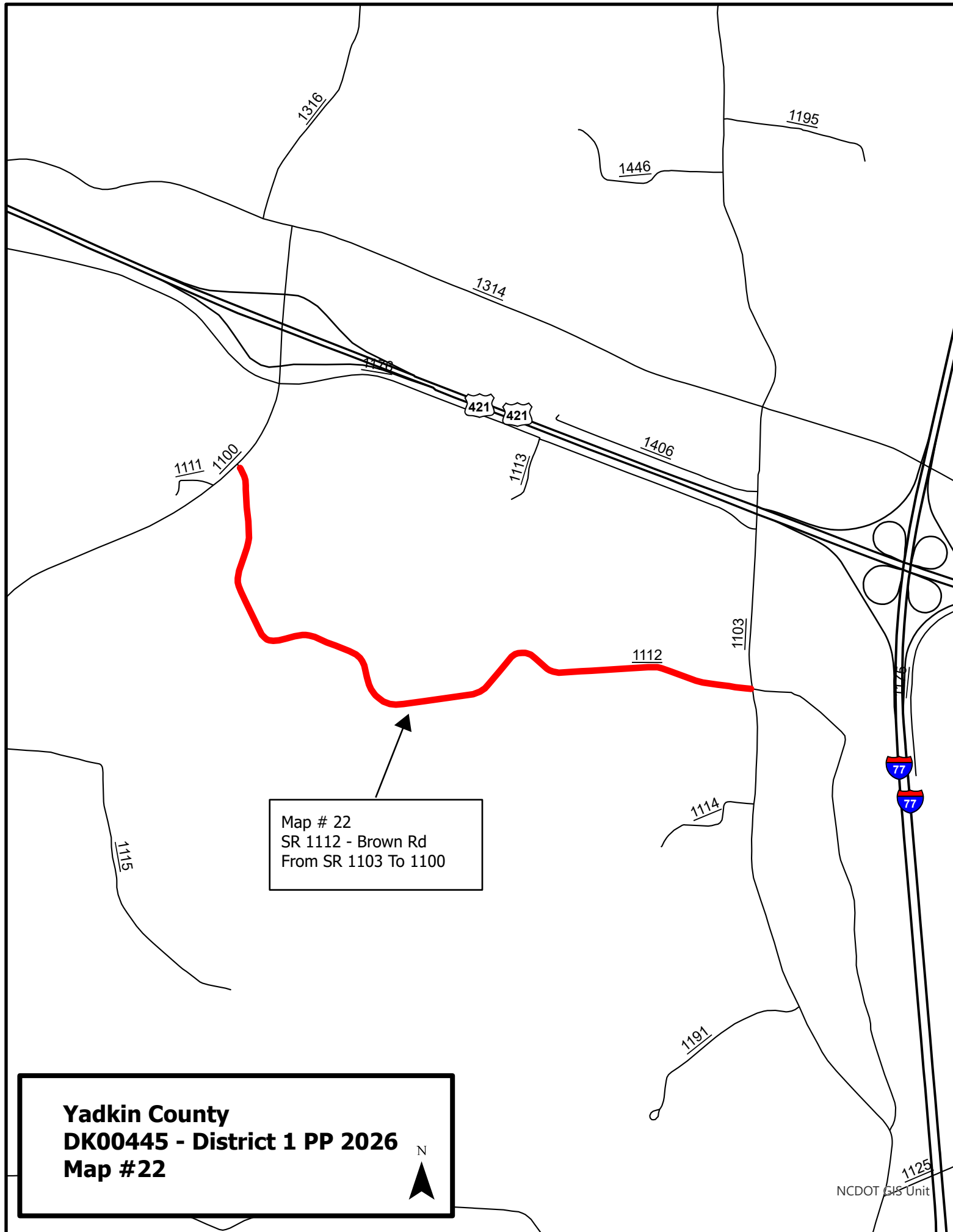
Map # 21  
SR 2452 - Jill Farm Rd  
From SR 1627 To EOM

Map # 13  
SR 1687 - Vernon St  
From SR 1627 To SR 1688

Map # 20  
SR 2451 - Page Farm Rd  
From SR 1627 To EOM



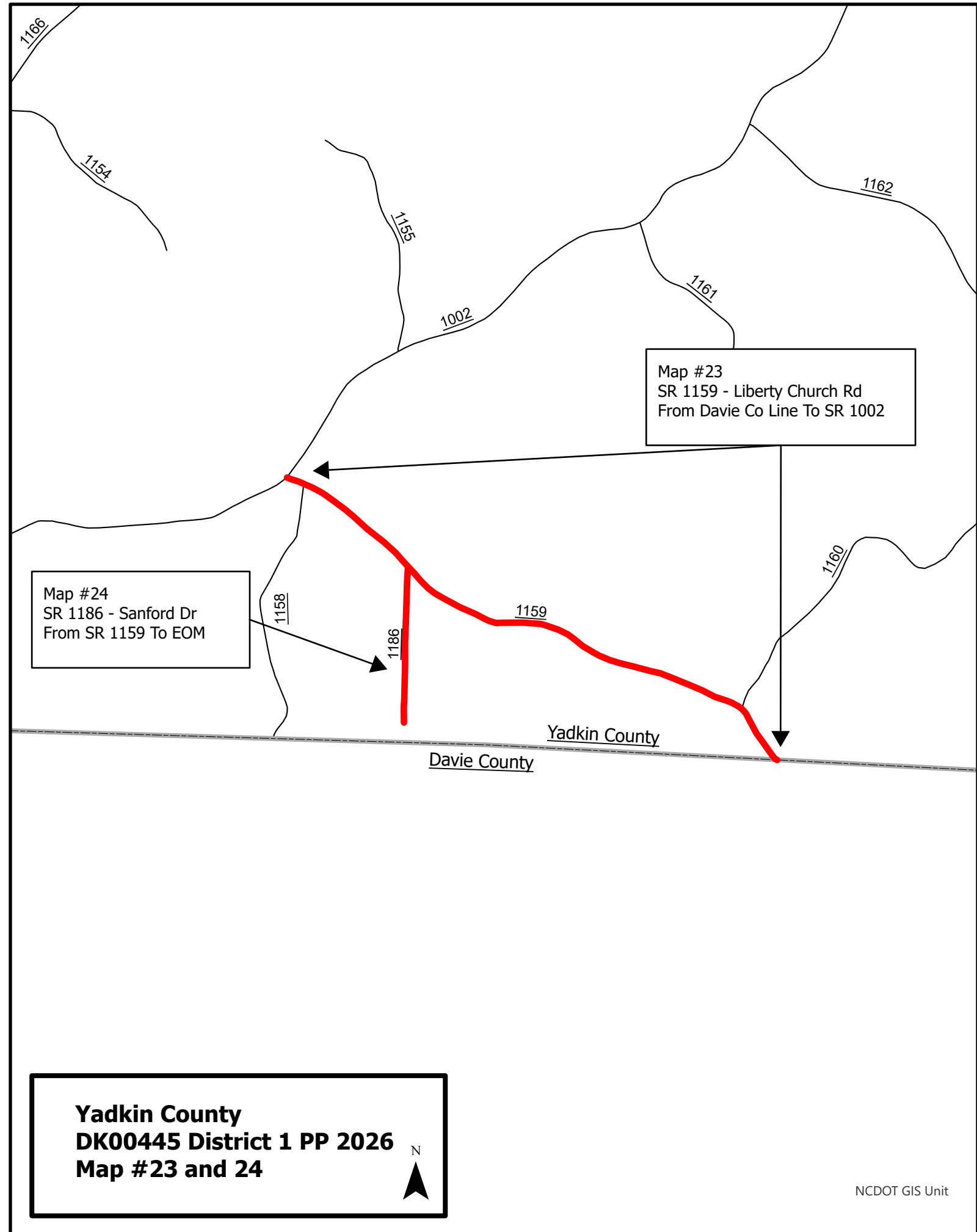




Map # 22  
 SR 1112 - Brown Rd  
 From SR 1103 To 1100

**Yadkin County**  
**DK00445 - District 1 PP 2026**  
**Map #22**

NCDOT GIS Unit



Map #23  
 SR 1159 - Liberty Church Rd  
 From Davie Co Line To SR 1002

Map #24  
 SR 1186 - Sanford Dr  
 From SR 1159 To EOM

Yadkin County  
 Davie County

**Yadkin County**  
**DK00445 District 1 PP 2026**  
**Map #23 and 24**

NCDOT GIS Unit

**Yadkin County**  
**DK00445 District 1 PP 2026**  
**Map # 25 and 26**



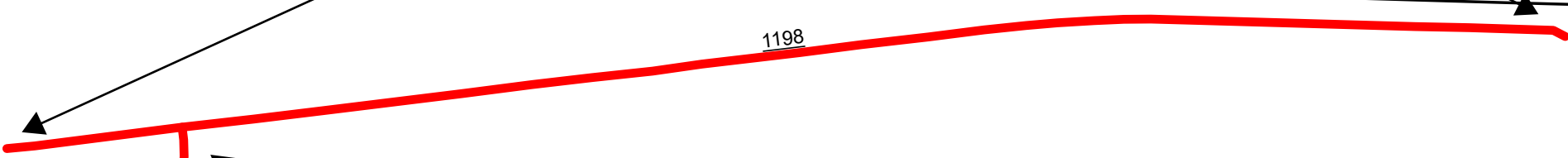
Map # 25  
SR 1198 - Memorial Rd  
From Culdesac To Culdesac

1134

421 421

1415

1198



1199

Map # 26  
SR 1199 - Short Rd  
From SR 1198 To SR 1150

1178

1147

1185

1200

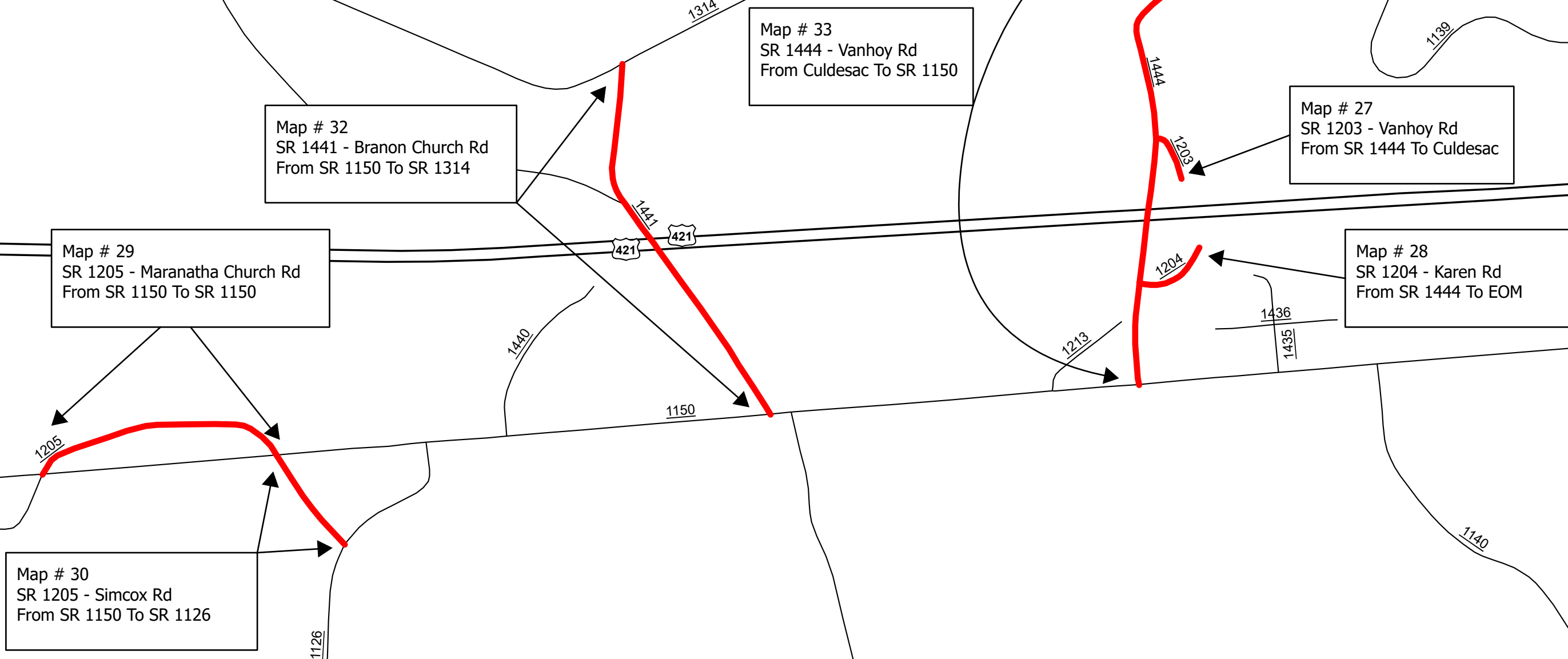
1166

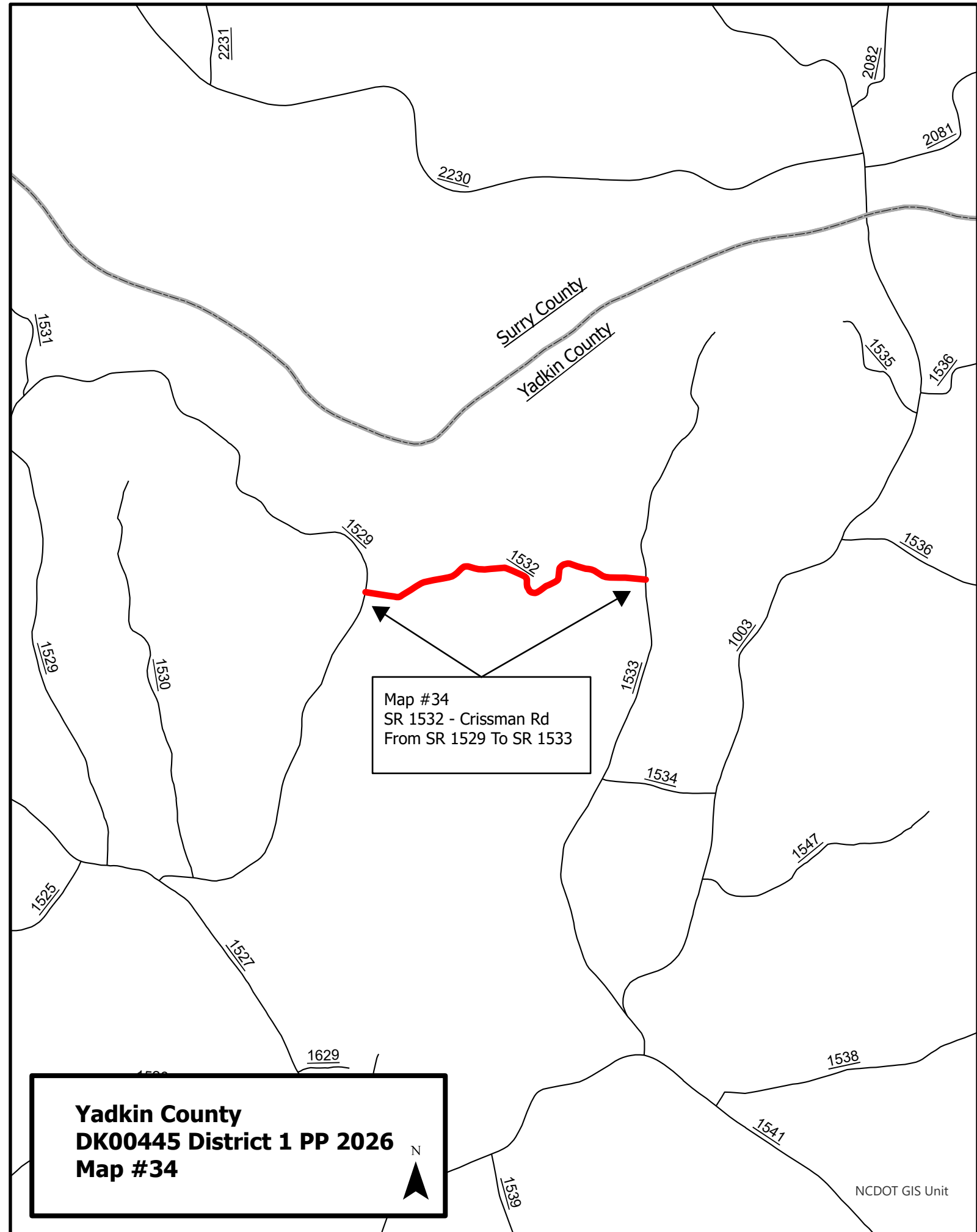
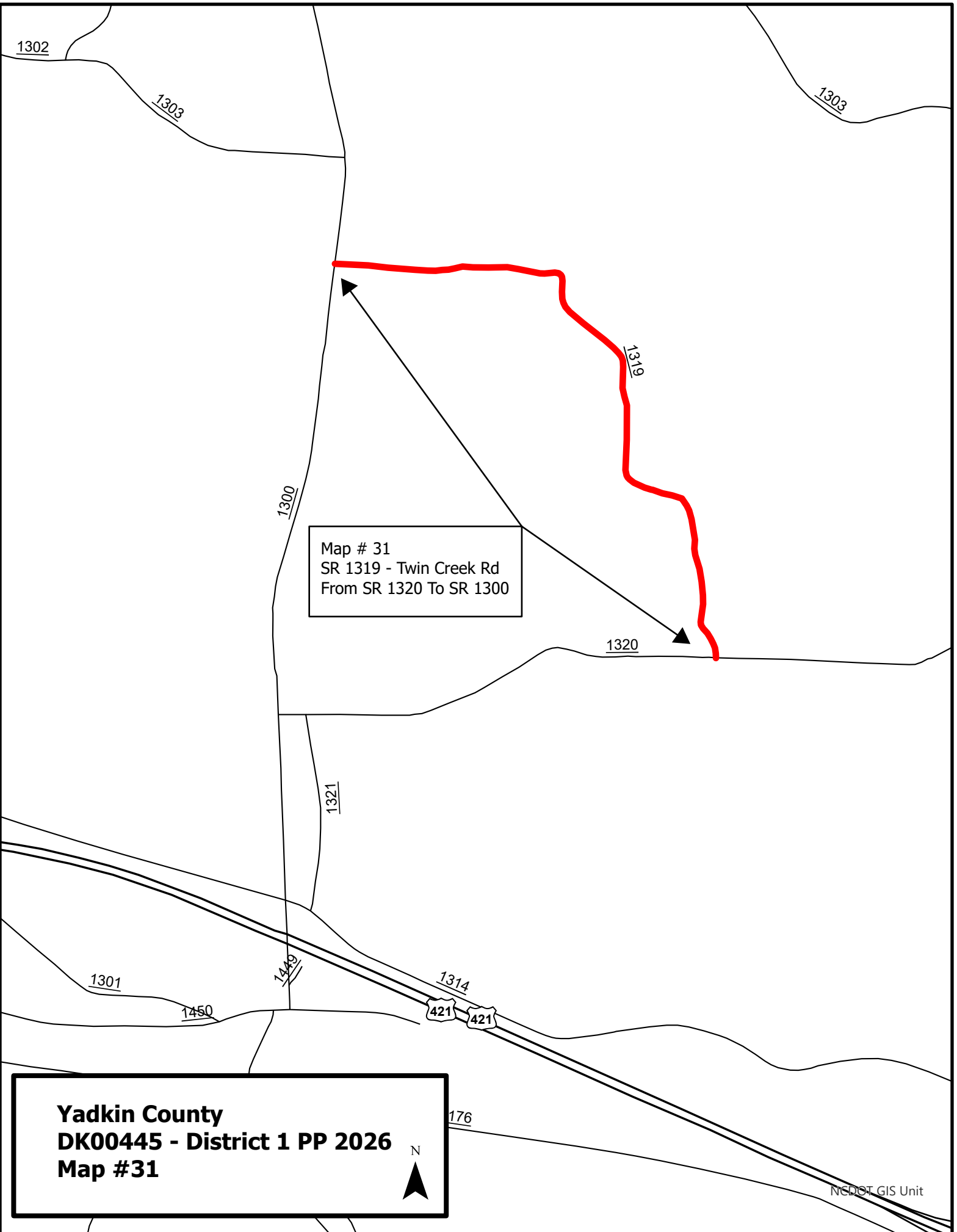
1150

1151

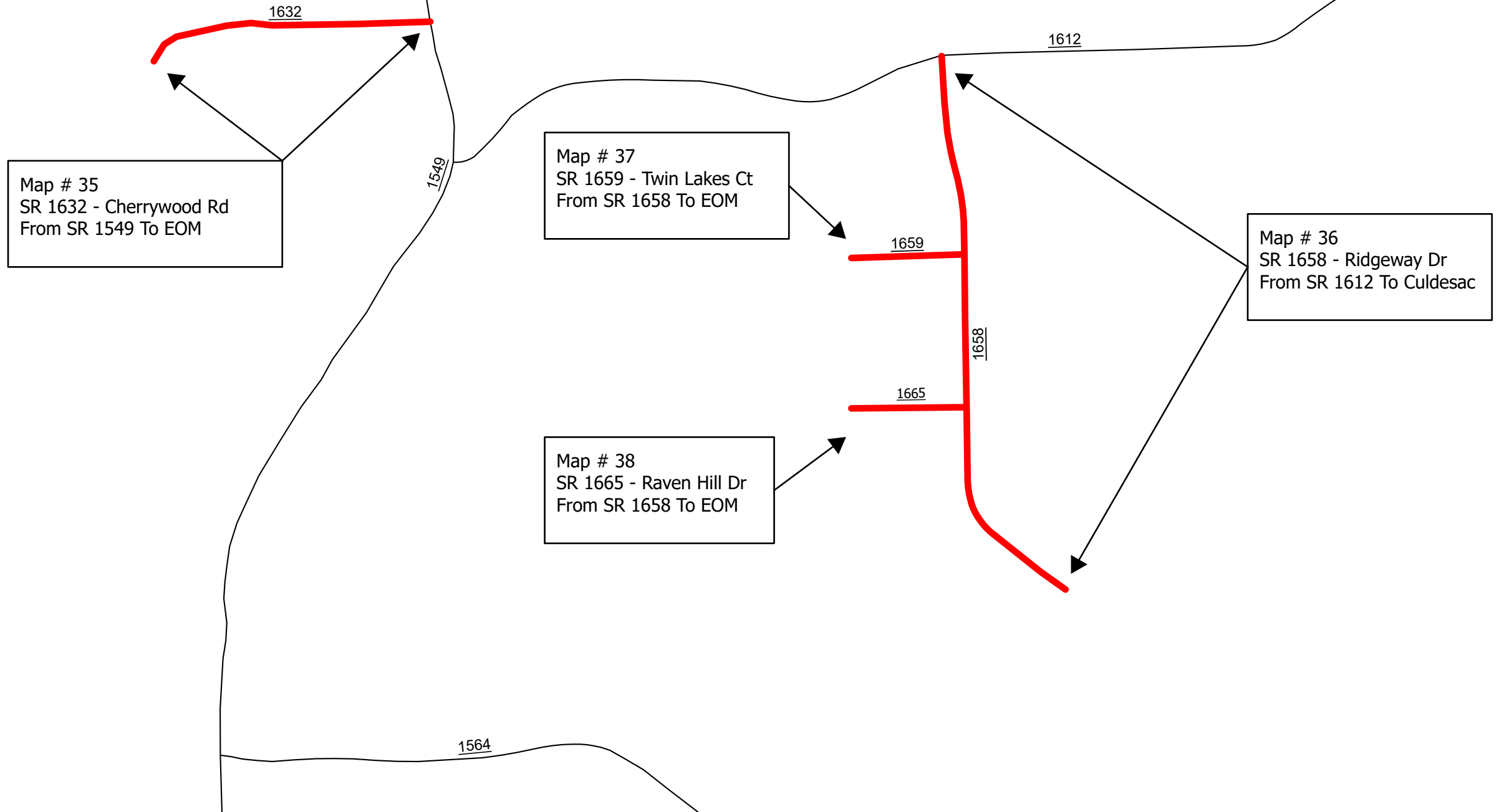
1152

**Yadkin County**  
**DK00445 District 1 PP 2026**  
**Map # 27, 28, 29, 30, 32, and 33**

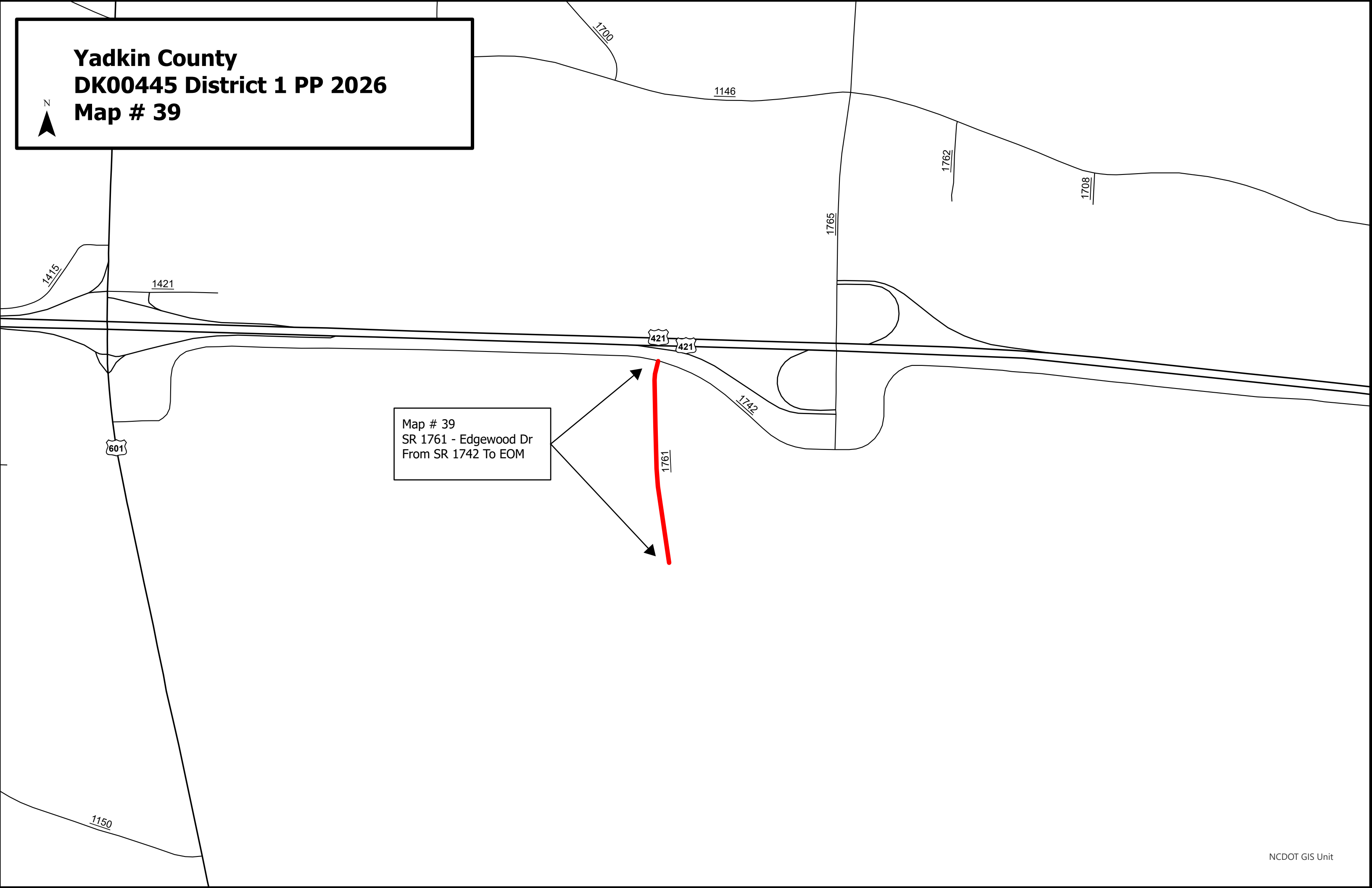




**Yadkin County**  
**DK00445 District 1 PP 2026**  
**Map # 35, 36, 37, and 38**

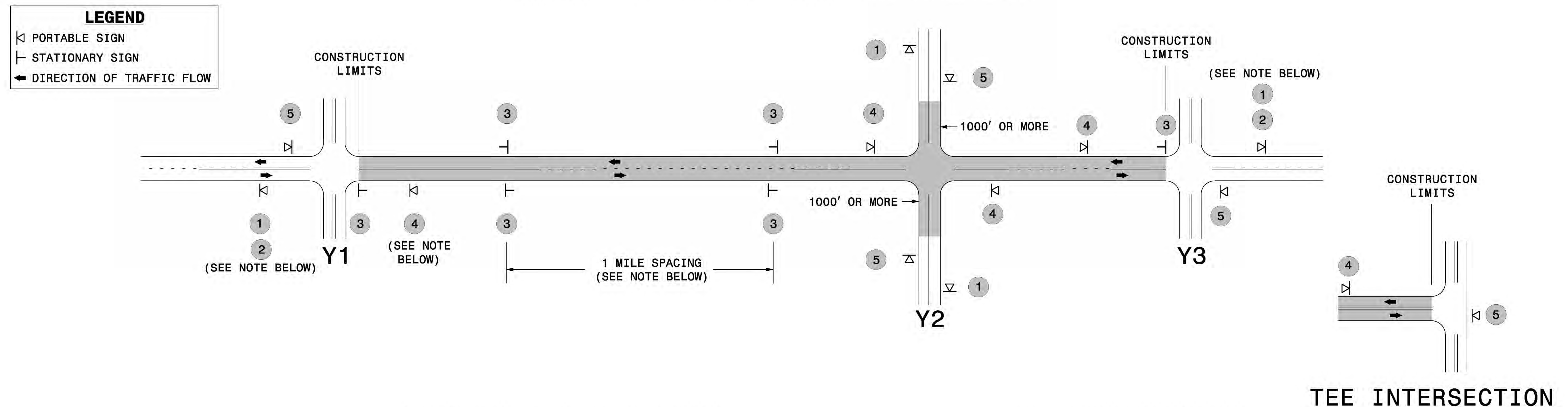


**Yadkin County**  
**DK00445 District 1 PP 2026**  
**Map # 39**



Map # 39  
SR 1761 - Edgewood Dr  
From SR 1742 To EOM

## SIGNING FOR ASPHALT SURFACE TREATMENT



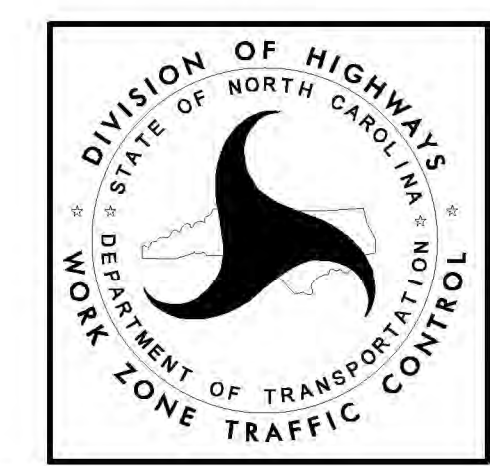
### MAINLINE (-L-) SIGNING

### -Y- LINE SIGNING

<b>SIGNING NOTES AND PLACEMENT PER DIRECTION</b>	1	 	<ul style="list-style-type: none"> <li>- PLACE 1000' PRIOR TO BEGINNING OF CONSTRUCTION LIMITS. ONLY USED ON -Y- LINES IF RESURFACING LIMITS EXTEND 1000' ALONG -Y- LINE.</li> <li>- SIGN #2 ONLY USED WHEN RESURFACING LIMITS ARE 2 OR MORE MILES IN LENGTH. ROUND UP TO THE NEAREST WHOLE NUMBER. DO NOT USE FRACTIONAL OR DECIMAL NUMBERS.</li> </ul>	<p><b>STATIONARY SIGNING NOT REQUIRED FOR THE FOLLOWING -Y- LINE CONDITIONS:</b></p> <ol style="list-style-type: none"> <li>1) LESS THAN 1000' OF RESURFACING ALONG -Y- LINE</li> <li>2) SUBDIVISION ROADS</li> <li>3) DEAD END ROADS</li> </ol> <p>WHEN PAVING/CONSTRUCTION ACTIVITIES PROCEED ACROSS AN UNSIGNED -Y- LINE, PORTABLE ADVANCE WARNING SIGNS SHALL BE USED ALONG THE -Y- LINE AS SHOWN BELOW. REMOVE UPON COMPLETION OF WORK.</p> <div style="display: flex; justify-content: space-around; align-items: center;"> <div style="text-align: center;">   <small>W20-1 48" X 48"</small>              PLACED 500' IN ADVANCE OF FLAGGER.         </div> <div style="text-align: center;">   <small>W20-7 A 48" X 48"</small>              PLACED 250' IN ADVANCE OF FLAGGER.         </div> </div>
	3	 	<ul style="list-style-type: none"> <li>- ALTERNATE THE FOLLOWING TWO SIGNS:</li> <li>- STARTING WITH "LOOSE GRAVEL" (W8-7) FOLLOWED BY "UNMARKED PAVEMENT".</li> <li>- PLACE INITIALLY AT THE CONSTRUCTION LIMITS AND SPACED 1 MILE APART THEREAFTER.</li> <li>- AT TEE INTERSECTIONS INSTALL INITIALLY 0.5 MILE FROM INTERSECTION AND SPACE 1 MILE APART THEREAFTER.</li> </ul>	
	4		<ul style="list-style-type: none"> <li>- THESE ARE FOR -Y- LINES THAT ARE "THROUGH" ROADWAYS. DEAD END AND SUBDIVISION ROADS ARE NOT "THROUGH" ROADWAYS.</li> <li>- INSTALL 500' +/- FROM EACH -Y- LINE APPROACH AS SHOWN ABOVE.</li> <li>- FOR MULTIPLE -Y- LINES THAT ARE SEPARATED BY 0.25 MILES OR LESS, TREAT AS A SINGLE UNIT AND INSTALL WITHIN 500' OF EACH APPROACH.</li> <li>- A MAXIMUM OF 2 SIGN SETS PER MILE. DO NOT INSTALL WHEN -Y- LINES ARE WITHIN 0.5 MILES FROM "END ROAD WORK" SIGN.</li> </ul>	
	5		<ul style="list-style-type: none"> <li>- PLACE 500' FOLLOWING THE END OF CONSTRUCTION LIMITS OR AS SHOWN WHEN WORK ENDS AT A 3-WAY TEE INTERSECTION.</li> </ul>	
	<p>THE ABOVE SIGNS ARE ALL THAT ARE REQUIRED FOR A CONTRACTOR TO BEGIN A RESURFACING CONTRACT. ANY ADDITIONAL SIGNS REQUESTED BY NCDOT DIVISIONS SHALL BE INSTALLED WITHIN 7 BUSINESS DAYS OF THE START OF CONTRACT WORK.</p>			

**MAPS LESS THAN 2 MILES**

FOR AST RESURFACING MAPS WITH CONSTRUCTION LIMITS LESS THAN 2 MILES IN LENGTH, USE A STATIONARY "LOOSE GRAVEL" SIGN AT THE BEGINNING CONSTRUCTION LIMIT FOLLOWED BY AN "UNMARKED PAVEMENT" SIGN MIDWAY THROUGH AND AN "END ROAD WORK" SIGN AT THE END CONSTRUCTION LIMIT.



**ADVANCE WARNING SIGNS  
FOR  
2-LANE ROADWAY  
ASPHALT SURFACE TREATMENT**

5/12/2017 5:21:10 PM \\MUNWZTC\Resurfacing\2L2W & AST Resurfacing Details\Resurfacing\_AdvWarn\_2Ln - AST.dgn User:kdalis